

YEAR 2013

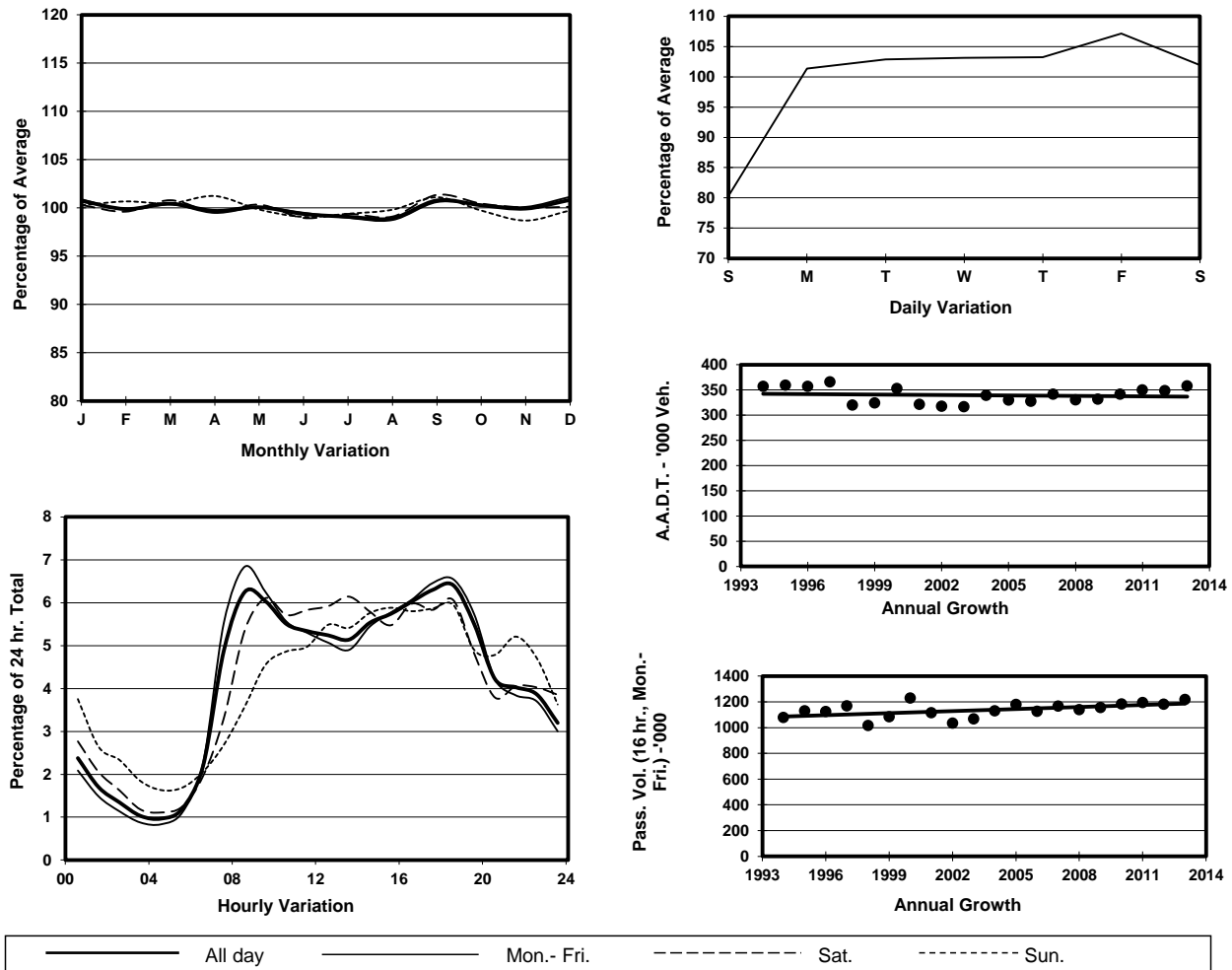
Location

Screenline K-K(West end of Kwun Tong)

Stations on Cordon/Screenline

3004, 4216, 4217, 4218 and 4219

1. TRAFFIC FLOW VARIATION AND GROWTH



2. TRAFFIC CHARACTERISTICS (BY DIRECTION)

Parameter	All - Day	Mon. - Fri.	Sat.	Sun.
EAST BOUND				
A.A.D.T.	183000	191150	188770	150350
R 12 / 24 - %	67.8	69.3	66.5	59.6
R 16 / 24 - %	85.6	86.9	83.7	79.6
AM Peak Hour	0800-0900	0800-0900	0900-1000	0900-1000
One-way flow at AM peak hour	11350	13030	10900	6580
T - % (AM)	-	11.8	-	-
PM Peak Hour	1800-1900	1800-1900	1800-1900	1800-1900
One-way flow at PM peak hour	11610	12290	11760	8970
T - % (PM)	-	7.6	-	-
Prop.of commercial vehicles - 16 hr.	-	10.8	-	-
WEST BOUND				
A.A.D.T.	174800	183380	179710	140170
R 12 / 24 - %	69	70.2	68.6	62.1
R 16 / 24 - %	86.5	87.6	84.8	81.3
AM Peak Hour	0800-0900	0800-0900	0900-1000	0900-1000
One-way flow at AM peak hour	11020	12600	11610	6650
T - % (AM)	-	9.7	-	-
PM Peak Hour	1700-1800	1700-1800	1700-1800	1600-1700
One-way flow at PM peak hour	11410	12330	10950	8340
T - % (PM)	-	10.2	-	-
Prop.of commercial vehicles - 16 hr.	-	10.7	-	-

3. OTHER INFORMATION AND COMMENT

4. Vehicle classification and occupancy - Monday to Friday

Time		Class of vehicle									
		Motor Cycle	Private Car	Taxi	Private LB	PLB	Goods veh.		Non Fr. Bus	Fr. Bus	
							Light	M & H		SD	DD
0700-0800	Pro	3.9	34.1	20.0	3.0	6.8	16.6	5.6	4.6	0.1	5.1
	Ocp	1.1	1.4	2.1	6.7	11.4	1.4	1.3	18.0	14.5	50.3
0800-0900 Peak Hour	Pro	4.0	46.2	18.7	1.3	4.9	14.1	3.9	2.8	0.1	4.0
	Ocp	1.1	1.3	2.0	5.5	13.9	1.6	1.3	20.6	14.9	57.6
0900-1000	Pro	3.0	39.1	20.7	1.0	4.8	20.2	5.7	1.5	0.1	4.0
	Ocp	1.1	1.3	1.9	2.0	10.7	1.5	1.3	12.4	7.8	30.4
1000-1100	Pro	2.6	32.7	20.6	0.8	4.1	26.9	7.4	1.0	0.1	3.8
	Ocp	1.1	1.4	1.9	2.3	9.4	1.5	1.3	5.2	6.2	24.4
1100-1200	Pro	2.4	34.7	18.0	1.2	4.6	27.3	6.6	1.2	0.1	3.9
	Ocp	1.1	1.3	2.1	1.7	8.9	1.4	1.3	7.7	8.6	27.6
1200-1300	Pro	2.3	38.5	18.8	2.2	4.6	22.0	6.3	1.5	0.1	3.7
	Ocp	1.1	1.4	2.1	4.9	8.3	1.5	1.3	8.3	6.9	25.4
1300-1400	Pro	2.6	35.9	17.7	1.2	4.8	24.5	7.7	1.7	0.1	3.8
	Ocp	1.1	1.4	2.0	2.9	9.0	1.5	1.2	10.2	8.1	28.3
1400-1500	Pro	2.9	34.9	17.6	0.7	3.5	27.7	7.5	1.6	0.1	3.4
	Ocp	1.1	1.4	2.1	2.4	8.4	1.5	1.3	11.4	8.7	27.8
1500-1600	Pro	2.9	37.1	18.2	1.8	3.4	23.9	7.0	2.1	0.1	3.5
	Ocp	1.0	1.4	2.0	6.4	11.0	1.5	1.3	14.3	9.4	29.7
1600-1700	Pro	3.1	36.8	19.0	2.3	3.9	23.0	5.2	3.0	0.1	3.6
	Ocp	1.1	1.4	1.9	3.7	12.2	1.5	1.3	10.0	14.1	36.5
1700-1800	Pro	4.7	41.5	17.4	1.6	4.3	20.1	3.9	2.1	0.1	4.4
	Ocp	1.1	1.4	2.0	3.5	12.8	1.6	1.3	6.1	13.2	43.2
1800-1900	Pro	5.3	52.4	16.7	0.5	5.0	12.6	2.1	1.5	0.1	3.8
	Ocp	1.1	1.4	2.2	3.2	13.6	1.4	1.3	20.8	18.8	60.5
1900-2000	Pro	3.3	56.9	19.1	0.2	5.9	8.1	1.2	1.3	0.1	4.0
	Ocp	1.1	1.5	2.2	1.5	12.3	1.4	1.2	11.6	15.6	48.5
2000-2100	Pro	3.7	49.9	25.2	0.1	5.9	8.3	1.2	1.1	0.1	4.5
	Ocp	1.2	1.5	2.0	1.6	9.9	1.5	1.4	8.0	11.9	32.4
2100-2200	Pro	3.5	45.4	30.2	0.3	6.3	7.2	1.7	0.7	0.1	4.6
	Ocp	1.1	1.4	2.0	1.9	9.6	1.4	1.2	6.2	8.6	31.5
2200-2300	Pro	3.7	45.3	31.3	0.1	7.5	5.3	1.1	0.6	0.1	4.9
	Ocp	1.1	1.5	2.0	1.6	9.6	1.4	1.4	11.0	6.8	31.5
16 hours	Pro	3.4	41.3	20.0	1.2	4.9	18.5	4.7	1.8	0.1	4.0
	Ocp	1.1	1.4	2.0	4.2	10.9	1.5	1.3	13.1	11.1	38.0

Legend

- Pro.** Proportion of vehicles in % (Sum may not add up to 100% due to figure rounding)
- Ocp.** Average occupancy of vehicles
- M & H** Medium and Heavy